



Partners in improving local health

# Hospital Services Reconfiguration: Travel Analysis (supplementary)



Right Care, Right Time, Right Place (RCRTRP) Programme

*Calderdale CCG*

*Greater Huddersfield CCG*

*Yorkshire Ambulance Service*

November 2015

Allan Worthy [allan.worthy@nhs.net](mailto:allan.worthy@nhs.net)

Dominic Rowney [dominic.rowney@nhs.net](mailto:dominic.rowney@nhs.net)

Dave Smith [dave.smith14@nhs.net](mailto:dave.smith14@nhs.net)

# Report Specification

## Data Protection

THIS INFORMATION IS COMMERCIALY SENSITIVE, SUPPLIED TO CALDERDALE CCG, GREATER HUDDERSFIELD CCG AND YORKSHIRE AMBULANCE SERVICE IN CONFIDENCE FOR THE SOLE PURPOSE OF COMMISSIONING. IT IS NOT TO BE DISCLOSED TO ANY THIRD PARTY WITHOUT THE EXPRESS WRITTEN PERMISSION OF THE PROVIDER(S) / CCG CONCERNED.

## Commissioning of Report

The report was commissioned by Jen Mulcahy, Programme Manager, Right Care, Right Time, Right Place (RCRTRP) Programme to assist with understanding the potential impact on Yorkshire Ambulance Service (YAS) of a prospective reconfiguration of Emergency Care provision across Calderdale and Greater Huddersfield CCG areas. The report supplements and should be read in conjunction with, the original, full report.

## Data description

This report uses patient transport data extracted from the YAS transport management system, covering both emergency calls where a patient is taken to a hospital Emergency Department, and the Patient Transport Service (PTS) where patients are taken home from a hospital Emergency Department, from 1<sup>st</sup> April 2014 to 31<sup>st</sup> March 2015.

## Geography

This report covers journeys from postcodes in the Calderdale and Greater Huddersfield CCG areas to any hospital Emergency Department, and journeys from any postcode outside of the Calderdale and Greater Huddersfield CCG areas to Calderdale Royal Hospital (CRH) and Huddersfield Royal Infirmary (HRI).

## Production

This report was produced by Allan Worthy, Clinical Commissioning Intelligence Specialist, with analysis and mapping by Dominic Rowney, Senior Information Analyst and data manipulation, management and analysis by Dave Smith, Data Architect.

The report was reviewed by Richard Hall, Clinical Commissioning Intelligence Specialist.

No part of this report should be reproduced or shared in any form or by any means without reference to NECS Clinical Commissioning Intelligence.

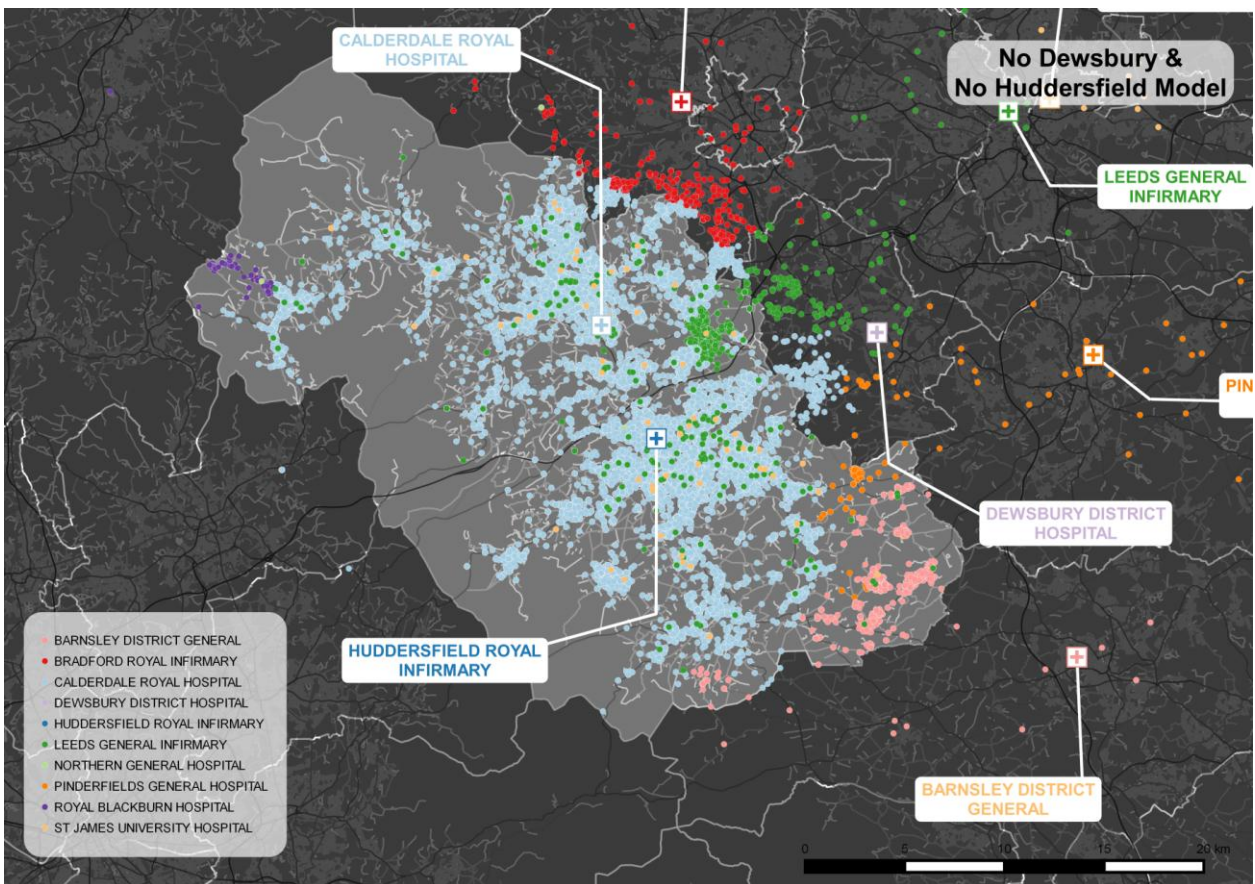
Please ensure this information is not taken out of context.

**Option 1 (supplementary) – A single Emergency Site at CRH. Modelling without HRI and without DDH**

Option 1 (supplementary) results were calculated as follows:

Destination Sites	Sum of Total Journey Time (mins)	Average Journey Time (mins)	Number of Journeys	% of Total Journeys
BARNSELY DISTRICT GENERAL	66,150.50	36.87	1,794	2.0%
BRADFORD ROYAL INFIRMARY	10,694.69	19.00	563	0.6%
CALDERDALE ROYAL HOSPITAL	1,818,273.67	21.51	84,534	91.9%
DEWSBURY DISTRICT HOSPITAL	0.00	0.00	0	0.0%
HUDDERSFIELD ROYAL INFIRMARY	0.00	0.00	0	0.0%
LEEDS GENERAL INFIRMARY	117,782.67	30.21	3,899	4.2%
NORTHERN GENERAL HOSPITAL	395.04	3.29	120	0.1%
PINDERFIELDS GENERAL HOSPITAL	10,306.44	35.18	293	0.3%
ROYAL BLACKBURN HOSPITAL	25,198.15	54.31	464	0.5%
ST JAMES UNIVERSITY HOSPITAL	13,157.78	41.64	316	0.3%
<b>Grand Total</b>	<b>2,061,958.93</b>	<b>22.42</b>	<b>91,983</b>	<b>100.0%</b>

- The total journey time in hours was 34,365.98 hours. An increase over Calibration of 10,071.86 hours.
- The average journey time was 22.42 mins.
- 91.9% of journeys were to CRH.
- 4.2% of journeys (an increase over Calibration of 2,739 patients) were to Leeds General Infirmary (LGI).
- 2.0% of journeys (an increase over Calibration of 1,451 patients) were to Barnsley District General (BDG).

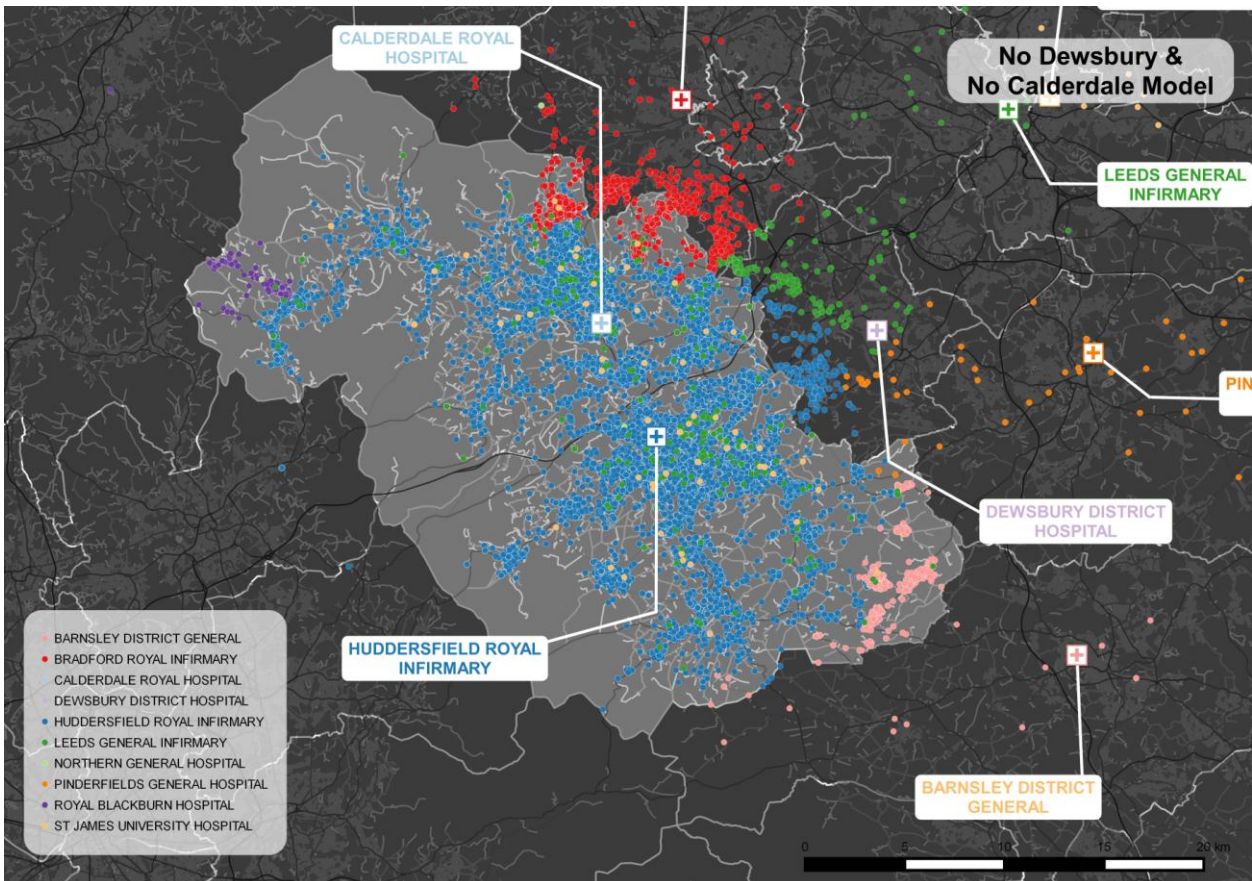


## Option 2 (supplementary) – A single Emergency Site at HRI. Modelling without CRH and without DDH

Option 2 (supplementary) results were calculated as follows:

Destination Sites	Sum of Total Journey Time (mins)	Average Journey Time (mins)	Number of Journeys	% of Total Journeys
BARNSELY DISTRICT GENERAL	52,399.79	34.66	1,512	1.6%
BRADFORD ROYAL INFIRMARY	116,865.06	27.13	4,308	4.7%
CALDERDALE ROYAL HOSPITAL	0.00	0.00	0	0.0%
DEWSBURY DISTRICT HOSPITAL	0.00	0.00	0	0.0%
HUDDERSFIELD ROYAL INFIRMARY	1,685,853.75	20.30	83,028	90.3%
LEEDS GENERAL INFIRMARY	38,924.65	27.98	1,391	1.5%
NORTHERN GENERAL HOSPITAL	395.04	3.29	120	0.1%
PINDERFIELDS GENERAL HOSPITAL	1,541.28	18.57	83	0.1%
ROYAL BLACKBURN HOSPITAL	75,740.28	61.83	1,225	1.3%
ST JAMES UNIVERSITY HOSPITAL	13,157.78	41.64	316	0.3%
<b>Grand Total</b>	<b>1,984,877.63</b>	<b>21.58</b>	<b>91,983</b>	<b>100.0%</b>

- The total journey time in hours was 33,081.29 hours. An increase over Calibration of 8,787.17 hours.
- The average journey time was 21.58 mins.
- 90.3% of journeys were to HRI.
- 4.7% of journeys (an increase over Calibration of 3,618 patients) were to Bradford Royal Infirmary (BRI).
- 1.6% of journeys (an increase over Calibration of 1,169 patients) were to Barnsley District General (BDG).
- 1.3% of journeys (an increase over Calibration of 905 patients) were to Royal Blackburn Hospital (RBH).



### **Impact on YAS journey times (supplementary)**

A reconfiguration of Emergency Care provision across CHFT which resulted in a single A&E site at CRH, with the assumption that there was no A&E provision at DDH, could potentially result in excess of 10,000 hours of increased journey time for YAS vehicles per year, under current demand within the system. It is likely that an increased burden in terms of A&E patients could fall on neighbouring hospitals providing A&E services, with the potential for significant increases at both LGI and BDG.

A reconfiguration resulting in a single A&E site at HRI, with the assumption that there was no A&E provision at DDH, could potentially produce around 8,800 extra hours of journey time for YAS, with demand at current levels. A resultant increased burden in terms of A&E patients could fall on neighbouring A&E providers, with possible significant increases at BRI, BDG and RBH.